



News from
12d Solutions

The Dirt Digger



Welcome

...to the **December 2014** issue of the **Dirt Digger**. Another exciting edition!

In this issue we will look at:

- **12d Synergy released!**
- **Updates: 12d Model 11**
- **Holiday season office closures**
- **Case Study: North Strathfield Rail Underpass Alliance**
- **ePlan**
- **ADAC**
- **Review: 12d Model International User Conference 2014**
- **Summary: 12d Innovation Awards 2014**

We look forward to hearing any feedback or news you might have.

Regards,

Dr Lee Gregory

Managing Director

lee.gregory@12d.com

Mr Alan Gray

Technical Director

alan.gray@12d.com

12d Synergy is here

You asked for it, and it's finally here! A data management solution that works seamlessly with 12d Model.

Designed specifically for engineering, architecture and construction offices, 12d Synergy gives your business a single source of truth for all your priceless business data.

A data management and project collaboration solution with wide-ranging uses within an organisation, 12d Synergy makes document and project collaboration simple for everyone in the office from designers and surveyors to managers and administration staff.

It's a single source of truth that makes data management and project collaboration simply easier!

12d Synergy takes the hard work out of managing and recording everything from project folders, files, tasks, transmittals and even relevant email correspondence.

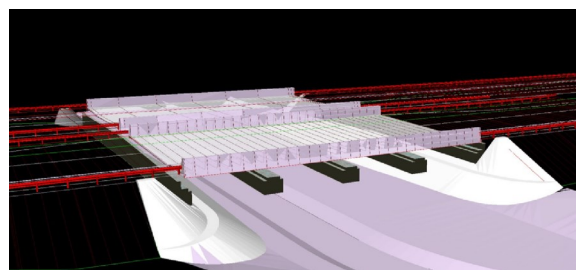
Contact us today (sales@12dsynergy.com) for a free demo to see how 12d Synergy can work for your business.

12d Model 11 - a solid approach to civil design

A ground breaking development in 12d Model 11 is the production of solid models for not just standard items such as pits and pipes but also for all the other important Civil objects including pavement layers, kerbs and tunnels.

And this has been done with simple additions to the MTF commands so that all the power of the existing (and new V11 MTF commands) is available for producing design accurate 3d Civil objects.

This revolutionary approach is not just for designers. It also allows Estimators and Construction groups to quickly build full 3d roads, railways or tunnels from just the design strings and typical sections. Plus the generated objects are perfect for 3d Printers!



Holiday season closures

The Sydney offices of 12d Solutions will be closed from lunch time on Tuesday 23rd December 2014 until the morning of Monday 5th January 2015. Enquiries during this time should be made on info@12d.com.

12d® Model

Do more with your software



12d Model 11 rollout

12d Model 11 is now being shipped.

New features in 12d Model 11 include trimeshes; 12d XML; Point Clouds; output to 3D PDF, STL and OBJ; ADAC; ePlan; clash detection; Tunnel setout and conformance; plot sheet composition; dimensions; leaders and tables; zipped 12da files; drag and drop; reading 2D PDFs; Pipe and Attribute toolbars; upgraded Create Roads including Snippets; enhanced sight distance and viewsheds; 1D and 2D drainage enhancements; 12d Field Setout and Pickup enhancements; hammer head components; multiple transitions in super alignments; MTF trim and many new MTF, snippet and chain commands.

Please contact your 12d Model reseller to receive 12d Model 11.

Rail Underpass tunnel pushes below passenger line

Great things have happened at North Strathfield, as the North Strathfield Rail Underpass Alliance pushes a tunnel for freight trains under the existing passenger rail. The tunnel will allow freight to move more easily from the main North Line at North Strathfield, westward towards Flemington.



The North Strathfield Rail Underpass Alliance is constructing the rail underpass under the Main North Lines at North Strathfield, removing the need for freight trains to cross over the existing tracks before they continue their journey towards Flemington.

The project forms part of the Northern Sydney Freight Corridor Program, a joint initiative of the Australian and NSW governments to improve the capacity and reliability for freight services between North Strathfield and Newcastle.

The project has been designed for Transport for NSW by NSRU Design Joint Venture (SKM & PB) and Mott Macdonald.

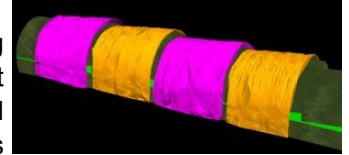
The key features of the project include:

- a new rail underpass for freight trains at North Strathfield
- new track to connect to the existing relief goods loop at North Strathfield
- 2.4 km of new track and upgrade of 850 m of existing track
- a new aerial concourse and the installation of four

new lifts at Concord West station.

- relocation of an existing RailCorp depot at North Strathfield Station
- associated civil and structural works
- provision of new rail systems, including overhead wire, high voltage, low voltage, communications and signalling

The project is being delivered by Transport for NSW, John Holland Group and Bouygues Travaux Publics Australia.



A road header is excavating the tunnel underpass, and the surveyors use the new Setout tools and trimeshes in 12d Field for all set out and conformance on the project.

Dave Mares (Alliance Survey Manager) said, "12d Field exceeded their expectations on this project, and its features surpassed the overseas software traditionally used for this type of project".

eSurvey welcomes ePlan

The 12d Model eSurvey module has been used since 2003 to prepare Cadastral plans for electronic submissions as XML files to LINZ in NZ. It also reads LINZ.XML files so that existing Cadastral plans no longer have to be manually entered.

In 12d Model 11, the eSurvey module has been extended to include ePlan - the new Australian standard for XML submission and publishing of Cadastral plans. ePlan is currently being introduced in New South Wales, Queensland and Victoria, and 12d Solutions is working with each of the Departments in those states.

ADAC in 12d Model 11

2015 will be a big year for the IPWEA standard ADAC (Asset Design and As Constructed) as a number of Australian Councils and Water Authorities move to requiring ADAC 4.1 XML files as part of the project deliverables.

12d Model 11 includes options to create and write ADAC data as well as reading in ADAC.XML files. In V11, the 12d-ADAC options are part of the relevant 12d Model modules and are included free of charge for customers on maintenance.

For all those interested, 12d will be giving ADAC webinars in January 2015, so if you would like to participate, please register at the following links: [6th January](#) and [13th January](#).



12d International User Conference 2014

Our latest 12d Model International User Conference - held in Brisbane on **27-29 July 2014** - has been hailed our best yet.

Nearly 400 people attended over the three days. Conference delegates were given a wealth of opportunities to interact with 12d Solutions staff and other experienced 12d Modellers, and the benefits of this have been expressed to us by many.

The Conference highlighted all the new features in 12d Model 11, and much more. There were 'Birds of a Feather' breakout sessions on Design, Surveying, and Water and Drainage, as well as a new one on 12d Synergy.

A big 'thank you' to our wonderful Dinner Sponsor – C.R. Kennedy - and to our Dinner performer, Brad Blaze, whose speed painting wowed the crowd. Thank you also to those who presented User papers; the time and effort you spent on these was greatly appreciated by 12d Solutions and Conference attendees.

Our illustrious guest speaker, Dr Karl, was a big hit with delegates - he gave a rousing talk on the Monday afternoon, and stayed around to handle the toughest science-related questions our attendees could muster!

The Conference DVD is being created as we speak, and will be an excellent resource when it is released in the new year! Some videos will be on YouTube after the DVD has been sent out.

We look forward to seeing you all at the 2016 Conference!

2014 12d Innovation Awards

Due to the overwhelming success of the inaugural 12d Innovation Awards, they are now a regular biennial feature (every two years), with the prizes awarded at the 12d User Conference Dinner.

We were again blown away by the standard of the entries, and were amazed at how innovatively 12d is being used and the Awards entries showed that what many entrants deem to be 'standard' is actually quite advanced for the industry.

The winners for 12d Innovation Awards for 2014 were:

Overall: Andrew Sinclair - Eliot Sinclair & Partners (NZ)

Customisation: Daniel Winter - Cardno (NZ)

Design & Visualisation: Mark Hagan and Matthew Kronk - Kehoe Myers (Qld)

Survey & Construction: Andrew Sinclair and Graeme Crouchley - Eliot Sinclair & Partners (NZ)

Drainage, Sewer & Utilities: Charlie Dickson - Christchurch City Council and SCIRT (NZ)

Small Company: John McFarlane **Medium Company:** Jimmy Soo

Large Company: Phil Campbell **Government:** Andrew Howes

'Special Mention': Thane Richardt

For a full summary of the winners, see our [web site](#).

Congratulations to the winners!

Sales & Support

AUSTRALIA

NSW, ACT & SA

Extra Dimension Solutions

admin@exds.com.au

Ph. (02) 9452 6771 (Sales)

(02) 9453 9449 (Support)

WA - Design

Critical Image/12d WA

wa_sales@12d.com

Ph. 0411 601 066 (Sales)

wa_support@12d.com

(08) 9574 6816 (Support)

WA - Survey

12d Solutions

graham.wirth@12d.com

Ph. (02) 9970 7117 (Sales & Support)

VIC & TAS

12d Victoria

vic_sales@12d.com

vic_support@12d.com

Ph. (03) 9005 7626 (Sales & Support)

QLD & NT

12d Queensland

qld_sales@12d.com

Ph. (02) 9970 7117 (Sales)

(07) 3040 7880 (Support)

UK, EUROPE, MIDDLE EAST & AFRICA

12d UK

sales@12d.co.uk

support@12d.co.uk

Ph. +44 (0) 845 051 0372 (Sales & Support)

NEW ZEALAND

12d NZ

lane@12d.co.nz

Ph. +64 27 477 7787 (Sales)

+64 4 564 3288 (Support)

ASIA

12d

soon.teh@12d.com

AMERICAS

12d Canada

mark.poynter@12d.com

Ph. +1 604 676 1706

FIJI

Lukemine Enterprises

lukemine@connect.com.fj

Ph. +679 337 0858 (Sales)

OTHER REGIONS

12d Solutions

info@12d.com



Welcome Aboard to our New Licences and Upgrades from...

- 43 Below - NZ
 Abu Dhabi Municipality - UAE
 Acor Consultants - NSW
 Adamson Shaw - NZ
 ADW Johnson - NSW
 AECOM - NSW, Qld, WA, NZ
 AGTEK Development Company - USA
 Align Surveyors - NZ
 Aker Solutions Australia - Qld
 Aktor/Al Jaber Joint Venture - Qatar
 Al Fara'a Group - UAE
 Allroads Pty Ltd - Qld
 Alluvium Consulting - Qld, Vic
 AM Civil Design - Qld
 APH Contracting - WA
 Arman Larmer Surveys - PNG
 AT & L - NSW
 AsCon Roads - UAE
 Aurecon Group - Qld; NZ
 Aurizon - Qld
 Ausenco - Qld
 Auspat Australia - NSW, Qld
 Australia Wide Group - Qld
 Australian Rail Track Corporation - NSW
 Australian Survey Hire - Qld
 AVMAP - NSW
 Ayson & Partners - NZ
 B T W South - NZ
 Balfour Taylor & Associates - NZ
 Baulderstone - NSW
 Baulderstone Abigroup Joint Venture - NSW
 BCS Consulting Engineers - Vic
 Beca - Qld, Vic, NZ
 Bennett + Bennett - Qld
 Bereza Civil Surveys - ACT
 Beveridge Williams - Vic
 BG & E Consulting Engineers - Qld, WA
 BGC Contracting - WA
 Black and More - Qld
 BMD Group - Qld
 Bonacci Group Pty Ltd - NSW, Qld
 Boral - Vic
 Bornhorst and Ward - Qld
 Bouygues Travaux Publics - NSW
 Boyden & Partners - NSW
 Brandon & Associates - Qld
 Brazier Motti - Qld
 Breese Pitt Dixon - Vic
 Brown Consulting (Aust.) - NSW, Qld, Vic
 Bundaberg Regional Council - Qld
 Cairns Regional Council - Qld
 Calder Harris Surveyors - SA
 Calibre Projects - WA
 Calibre Rail - WA, Qld
 Candor3 - NZ
 Cardno - NSW, Qld, Vic, WA, NZ
 Cassowary Coast Regional Council - Qld
 Cato Bolam Consultants - NZ
 CDAM Survey - WA
 Central Highlands Regional Council - Qld
 Cheal Consultants - NZ
 China Railway 1st Group - Fiji
 Chris Smith & Associates - Vic
 City of Greater Geraldton - WA
 City of Swan - WA
 Civil Dimensions - Qld
 Civil Engineering and Construction Surveys - Qld
 Civil Geospatial Services - Qld
 Civil Solutionz Ltd - NZ
 Civil Technology - WA
 CJPorter Surveys - Qld
 Clarence Valley Council - NSW
 CLC Consulting Group - NZ
 Cogswell Surveyors - NZ
 Complete Urban - NSW
 Conway Burrows Hancock - NSW
 Cooke Consulting - WA
 Cossill and Webley - WA
 Covey Associates - Qld
 Craig and Rhodes - NSW
 CRAIG Surveying - Qld
 CSCEC - UAE
 Curtin University - WA
 Cuttriss Consultants Ltd - NZ
 Dalton Consulting Engineers - Vic
 Daracon Group - NSW
 Davie Lovell Smith - NZ
 Davis Ogilvie & Partners - NZ
 DC Pro Engineering - Sharjah
 Department of Finance and Services - NSW
 Department of Military Works - UAE
 Development Engineering Consultants - WA
 Dinas Tata Ruang Dan Tata Bangunan Pemko - Indonesia
 Diversi Consulting - NSW
 Downes Survey Group - Qld
 DPTI - SA
 Dubbo City Council - NSW
 Dutco Construction Co. - Oman
 Eliot Sinclair & Partners - NZ
 Elite Survey - NSW, Qld
 Empire Engineering - Qld
 Engenium - WA
 Engineering Solutions Qld - Qld
 Engineering Surveys - SA
 Ensuv - NZ
 Environment Canterbury - NZ
 Envivo - NZ
 Ertech Pty Ltd - WA
 ESO Surveyors - NSW
 Eurobodalla Shire Council - NSW
 Farr Engineers Associates - Qld
 FK Gardner & Sons - Qld
 Flanagan Consulting Group - Qld
 Fletcher Construction Company - NZ
 Fortescue Metals Group - WA
 Fraser Coast Regional Council - Qld
 Fulton Hogan Group - NSW
 Fyfe - SA
 Gary Deane Constructions - Qld
 Gary McLean - WA
 Geleon Consulting - Qld
 GEO Image Services - NSW
 Geo-Metric Surveying - NSW, Qld
 George Bourne & Associates - NT
 GHD - Brisbane, Melbourne
 GM-CCS - Qld
 Grant and Cooke - NZ
 Greenhaven Projects - Qld
 Ground Developments - UK
 Gulf Rock Engineering - UAE
 Habtoor Leighton Group - UAE
 Halls Fripp Surveying - Qld
 Hard and Forester - NSW
 Harrison Grierson - Qld; NZ
 Harrison Infrastructure Group - Qld
 Hatch Associates - Qld
 Heath Consulting Engineers - NSW
 Hick Bros Civil Construction - NZ
 Hopkins Consultants - NSW
 Horizon Surveys - WA
 Hughes & Associates - NZ
 Hyder - NSW, Qld
 Indesco Consulting Engineers - ACT
 Intelara - Qld
 Inglis Survey - Qld
 Innovo Consulting - Serbia
 Insite SJC - Qld
 J. Wyndham Prince - NSW
 Jacobs Group - Adelaide, Brisbane, Melbourne, Perth, Sydney; NZ
 JDSi Pty Ltd - WA
 JKS Trading - Malaysia
 John Holland Group - NSW
 Jones Flint and Pike - Qld
 Kea Consultants - NZ
 Kellogg Brown and Root - Qld, WA
 Kensington Properties - NZ
 Khansaheb Civil Engineering - Dubai
 KiwiRail - NZ
 Laing O'Rourke - Qld
 Kramer Ausenco - Qld
 Land and Marine Surveying - NZ
 Land Dimensions - NZ
 Land Information New Zealand - NZ
 Land Surveys No Problems Just Solutions - Mackay, WA
 Leighton Contractors - NSW, Qld, WA; NZ
 Lend Lease - NSW, Qld, Vic, WA
 Lim Surveyors - NZ
 Linders Meten and Peilen - The Netherlands
 Local Government Engineering Services - NSW
 Logan City Council - Qld
 Lycopodium Engineering - WA
 Lynton Surveys Pty - NSW
 McDowall Affleck - WA
 Mackay Regional Council - Qld
 McKinnon Earthmoving - Vic
 McMurtrie & Associates - Qld
 McVeigh Consulting Engineers - Qld
 Main Roads WA - WA
 Meinhardt - Vic
 Melbourne Airport - Vic
 Milestone Survey - Qld
 Millar Merrigan - Vic
 Ministry of Environment & Water - UAE
 MinStaff Survey - Qld
 Monteath and Powys - NSW
 Moreton Bay Regional Council - Qld
 MPA Surveying - Qld
 MPN Consulting - Qld
 MS Design and Drafting - Vic
 Multi Surveying - NSW
 MWH - NZ; India
 Napier City Council - NZ
 Narrandera Shire Council - NSW
 National Airports Corporation - PNG
 Newell Engineering Group - Qld
 Northrop Engineers - NSW
 Office of Environment and Heritage - NSW
 Opus - NSW, Qld
 Origin Energy - Qld
 Ostwald Bros Civil - Qld
 Pacific Survey - NSW
 Parsons Brinckerhoff - NSW, Qld, Vic
 Paterson Pitts Partners - NZ
 PDC Design - WA
 Pegasus Civil - NZ
 Phoenix AG - Vic
 PIHA (Mineral Resources) - WA
 Pipeline Construction Services - NSW
 Pirie Surveying - NZ
 Pitt and Sherry - Vic
 Precision Survey Group - NSW
 Pritchard Francis - WA
 Projex Partners - Qld
 Proteus EPCM Engineers - WA
 PT Bhumi Rantau Energi - Indonesia
 PT Eva Noor - Indonesia
 PT Kalimantan Citra Bara
 PT Kalimantan Prima Persada - Indonesia
 PT Kitadun Tandung Mayang - Indonesia
 PT Pama Persada Nusantara - Indonesia
 PT Tambang Batubara Bukit Asam - Indonesia
 PT Waskita Karya - Indonesia
 Public Transport Authority - WA
 Queensland Department of Transport and Main Roads - Qld
 Queensland Rail - Qld
 R & C Surveys - NSW
 Rail and Road Professional Services - NSW
 Rand Surveys - Qld
 Ray Surveys - ACT
 RD Consulting - Vic
 Reed Constructions Australia - NSW
 Reyburn and Bryant - NZ
 RHM Consulting Engineers - NSW
 Rio Tinto - WA
 Rivland Surveyors - NSW
 RJS Dynamic Systems - WA
 RMA Consulting Engineers - Qld
 RoadNet - Qld
 Roads and Maritime Services - NSW
 Robson Civil Projects - NSW
 Ross Cumming Engineering - Vic
 RPC - NZ
 RPS - Brisbane, Cairns, Gladstone, Mackay, Newcastle, Sunshine Coast
 RPS Aquaterra - WA
 RTN Drafting Services - Vic
 SCIRT - NZ
 Seam Surveys - Qld
 Sedgman Consulting - Qld, WA
 SEE Civil - NSW
 SEMF - Tas
 Shamrock Civil Engineering - Qld
 Sheehy & Partners - Qld
 SJE Consulting - Vic
 SKL Group - Qld
 SKS Surveys - SA
 SMEC - ACT, NSW, Qld, Vic; Hong Kong
 Southfront Consulting - SA
 Spiire - Vic, NZ
 STP Consultants - Qld
 Stringer Surveys - Qld
 Sunshine Coast Council - Qld
 Survey 3d - Qld
 Survey Dynamics - WA
 Survey Group - WA
 Survey North - WA
 Survus Contracting - NZ
 Sydney Catchment Authority - NSW
 Taylor Miller Consulting - Vic
 Terraco - Vic
 Tetra Consulting - Qld
 TGM Group - Vic
 The LandPlan Group - Vic
 Thiess - NSW; Indonesia
 Tim's Design and Drafting - NT
 Timaru District Council - NZ
 Tincon - NSW
 TMK Consulting Engineers - SA
 Tomlinson & Carruthers Surveyors - NZ
 Tonkin and Taylor Group - NZ
 Toowoomba Regional Council - Qld
 Total Property Developments - Vic
 Traffic Design Group - NZ
 TRN Group - NSW
 TRS Enterprises - NSW
 TrueSouth Survey Services - NZ
 TSS Total Surveying Solutions - NSW
 UDP Consulting Engineers - Qld
 Urban Design and Management - Vic
 Urbanise - WA
 URS - NSW, Qld, Vic; NZ
 Valley Survey Company - NZ
 van der Meer Consulting - Qld
 Vassallo Constructions - Qld
 VFT Engineering Surveyors - NSW
 Victorian Green Work - Vic
 Wallbridge and Gilbert - SA
 Water Technology - Vic
 WBM - Qld
 Wellington Regional Council - NZ
 Wellington Shire Council - Vic
 Whelans Insite - NSW
 Whelans Survey and Mapping Group - WA
 Wilson Survey and Design - Qld
 Wilson Survey Group - Qld
 Wood and Grieve - WA
 Wood & Partners - NZ
 WorleyParsons - NSW, Qld, Vic, WA; Canada
 Yeoman & Associates - NZ

